

"THE OLDEST A.M.A. SANCTIONED SOARING CLUB IN THE WORLD"

P.O. BOX 1673, COSTA MESA, CA. 92626

PRESIDENT :	JOHN KRUG	974-3779
VICE-PRESIDENT :	DICK PANTZAR	642-1380
SECRETARY :	KEN MYERS	968-6901
TREASURER :	FRANK CHASTELER	545-2185
CONTEST DIRECTOR :		
GENERAL DIRECTOR :	Morris Smith	548-5353
EDITOR	KEN MYERS	

August, 1982

"THE SOCIETY COLUMN"

VOL.19 NUMBER 8

#### SEPTEMBER CLUB MEETING

Our monthly meeting will be held on Sept. 1st. at 7:30PM in the Costa Mesa Consolidated Water District Office, 1965 Placentia St., Costa Mesa.

A topic of conversation will be Electric Sailplane contests. All the members interested in voicing an opinion about rules for future contests are urged to attend, and express their view points.

#### TPG SC2 CONTEST RESULTS FOR HHS MEMBERS

TPG SC2 contest results, and year to date standings for SC2 contests are listed below. Sixty One contestants attended this event on 7/25/82.

#### TPG SC2 CONTEST RESULTS FOR H.S.S. MEMBERS

		<u>YEAR END STANDING</u>
1.	F. Chasteler	4
4.	K. Nelson (3 way tie)	5
43.	T. Chasteler	22
48.	J. Krug	24
55.	P. Richardson	38
56.	H. Hall	25

#### SC2 FOR SEPTEMBER

Inland Soaring Society will host the next SC2 on Sept. 26th at CAJON High School in San Bernadino. A map and details are on the last page of this newsletter.

#### NEW MEMBERS

On behalf of all present members I extend a warm welcome to Ted Van Sickle as the latest flyer to join our club. For your roster, Ted's address is:

Ted Van Sickle  
8640 Manchester #16  
Buena Park, Calif. 92621  
714-523-0084

WELCOME TED!!!!!!

#### AUGUST ELECTRIC CONTEST

Our August contest featured nine (9) members. (There would have been 10 but my extension cord wasn't long enough to plug the plane into my generator. Maybe next time). The results are listed on the next page.

AUGUST ELECTRIC SAILPLANE  
CONTEST

	1.	Heacox	4000	won fly off
	2.	Krug	4000	
3.	3.	Boucher	3960	
	4.	Durham	3945	
	5.	Black	3940	
		F. Chasteler	3940	
	6.	Pantzar	3840	
	7.	Milburn	3720	
	8.	Smith	2454	

NEW MODEL

Herman Hall gave us some 1/9 scale plans for the latest "Hot Item" for an "open class power ship" featured in Model builder Magazine. I have reproduced them and will print them elsewhere in this issue. Thank you Herman for your contribution!

RESULTS OF THE LEISURE SUMMER FESTIVAL

The only result I have at this time is our own "El Presidente" John Krug placed 3rd overall. As soon as I get the rest of the finishes I'll list them.

CONTEST POSTPONED

The electric contest slated for August 29th at the Torrey Pines Gulls field has been postponed until sometime in October. I'll try to advise you when the new date will be.

THERMAL CONTEST FOR SEPTEMBER

HHS will host a Thermal contest at our field on Sept. 5th. Registration will begin at approximately 0830. There will be three (3) rounds of man on man flying. Tom Chasteler will be the CD.

FOR SALE

FOR SALE

FOR SALE

Aero Sport TXMTR & RCVR w/4 servos and charger. Complete Nicads on yellow/white. \$115.00 (was never used) Call Ken Myers 714-968-6901 after 7:00 PM.

WANTED

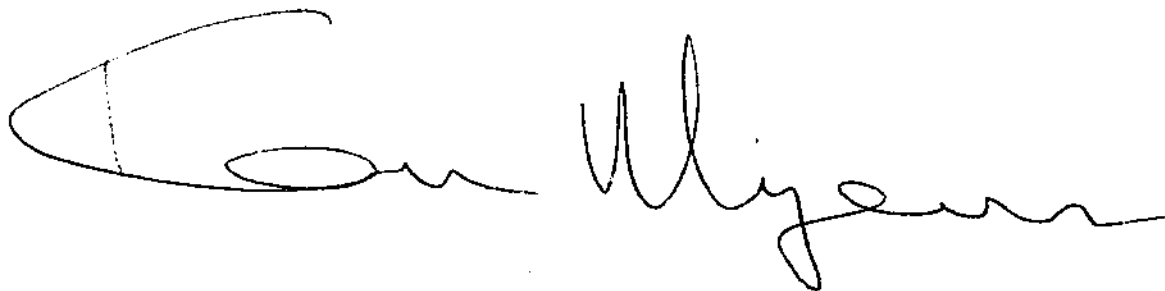
WANTED

WANTED

Any type (Leisure, Astro etc.) motors, systems, batteries, electric planes, plans etc. Contact Ken Myers, 714-968-6901 after 7:00 PM.

TILL NEXT TIME,

BLUE SKIES & SOFT AIR



As dollhouse furniture or model fittings, a sanding table is often a necessity for accuracy. The table shown here can be easily made by the hobbyist. Most of the work can be done with the Dremel Moto Shop for which the table is an accessory to the sanding disc.

Use hardwood such as oak and note that all pieces can be cut from a single piece of stock 1 x 6 x 10 in. long. The frame and wood pivots are constructed of pieces 3/4 in. by 3/4 in., and the table is 1/4 in. thick.

Once the pieces are rough-ripped, you can make final cuts with your Moto Shop. Then cut the 3/4 x 3/4-in. end notches in the frame sides to let in the frame front. The pivot blocks are let into the front frame member in dadoes 1/8 in. deep. Bore holes and cut the slots in the pivot blocks before rounding the tops. Use your corner braces to determine the width of the slot (kerf). The braces should be fairly snug, yet free enough to move within the slot. Attach pivot blocks to front frame member with screws and glue.

Bore the side frame pieces for assembly and counterbore the underneath side to let in the hex nut and lock washer at the saw base. Assemble the frame with screws and glue.

Now, using the dimensions in the drawing, position and drill one of the holes in the saw base. Attach the frame and use the hole in the other

#### MATERIALS LIST—SANDING TABLE

Key	No.	Size and description (use)
A	1	5/8 x 3/4 x 6 7/8" oak (frame front)
B	2	5/8 x 3/4 x 5 7/8" oak (frame side)
C	2	5/8 x 3/4 x 1" oak (pivot block)
D	1	1/4 x 2 3/4 x 7 5/8" hardwood (table)
E	2	1/2 x 1 x 1" corner brace
F	2	10-24 x 3/4" machine screw
G	6	10-24 lockwasher
H	2	10-24 wingnut (pivot nut)
I	2	3/4" No. 6 flat screw
J	2	5/8" No. 4 flat screw
K	2	10-24 x 1/2" machine screw
L	4	10-24 hex nut
M	2	10-24 x 1" machine screw
N	4	No. 10 flat washer
O	1	1/4"-dia. x 1 1/2" dowel
P	1	3/4"-dia. x 4" dowel

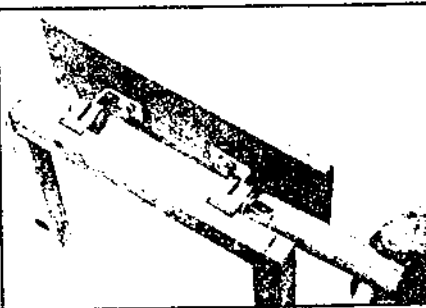
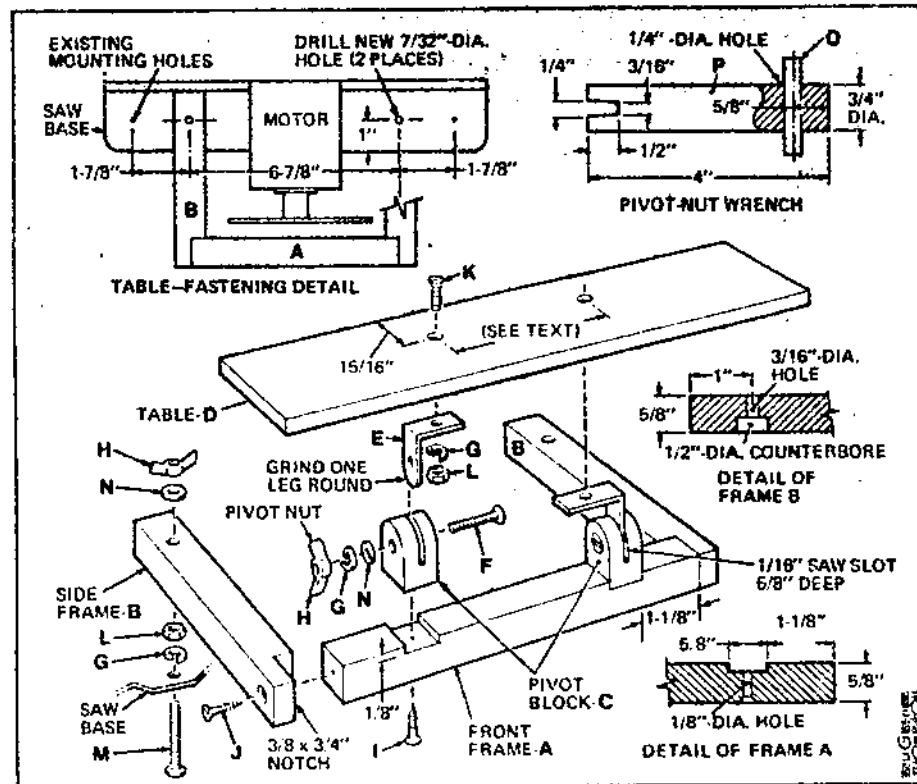
Misc.: Epoxy

leg to position and bore the second hole. Don't worry if the second hole doesn't fall exactly where it should according to the drawing. Just keep the front frame piece parallel to the sanding disc plane.

Install the corner braces after grinding one leg of each corner brace round. The pivot screws must be locked in place so they won't turn when the wingnuts are adjusted. You can do this by applying quick-setting epoxy cement over the head of the countersunk screw. To be effective, the holes in the wood pivot blocks should be counterbored sufficiently so the screwhead will be slightly recessed. This will allow the epoxy to grip some wood as well as the screwhead.



Here's an accessory sanding table for accurate and easy sanding on your Dremel Moto Shop. The Moto Shop itself can be used for most of the work after rough cuts.



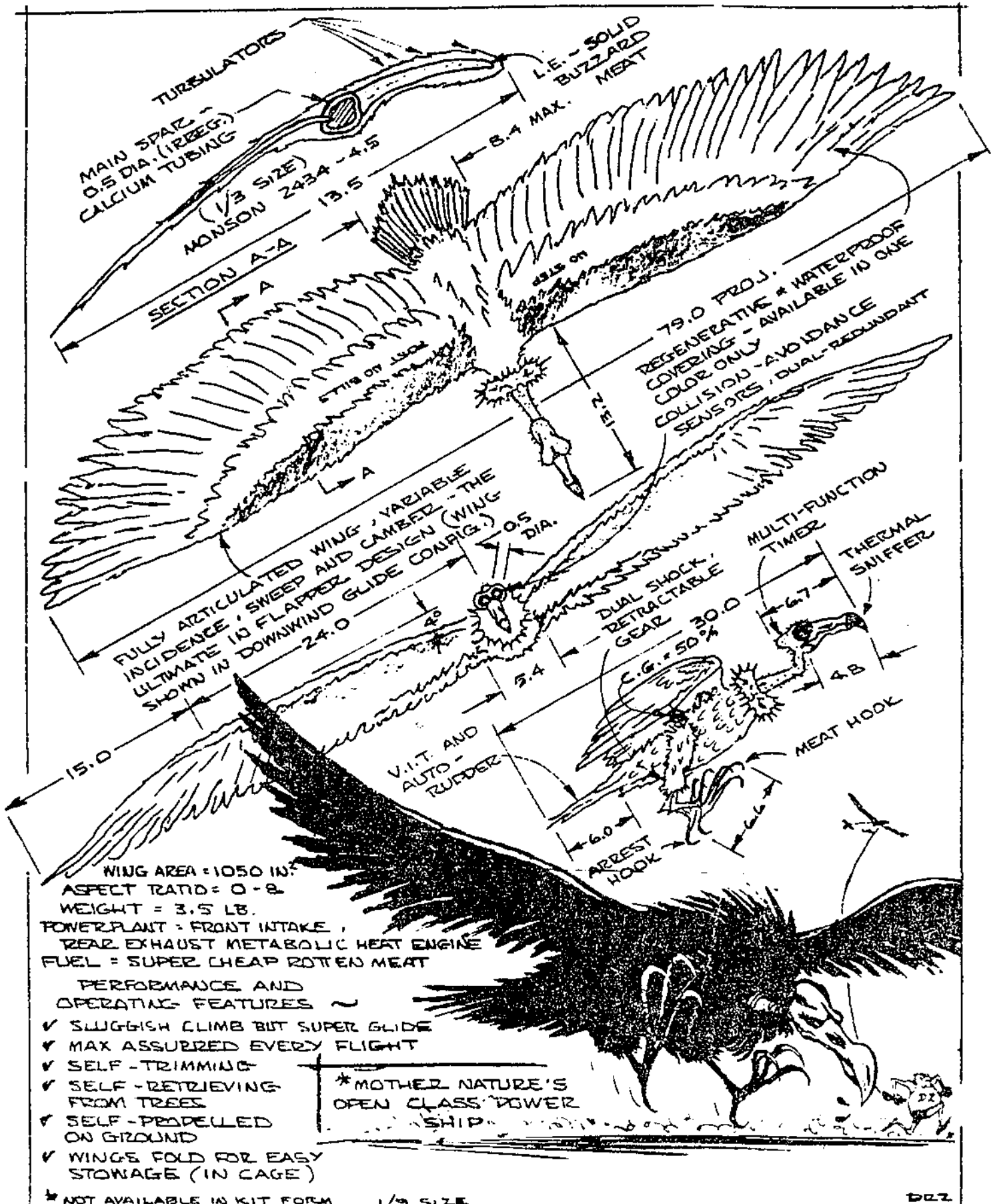
Adjust angle of the table with a pivot-nut wrench, as shown here. You make the wrench yourself from a 4-in. length of 1/4-in.-dia. dowel. Store it with the table.

Once braces are installed, position and bore the holes in the saw table. If you think that you haven't been too accurate, mount the table frame

on the saw base with the sanding disc in place. Then check to be sure you can tilt table as required without coming into contact with the disc.

To adjust the table's angle, you must make a pivot-nut wrench, as shown in the drawing on page 88. The wrench is made from a 1/4-in.-dia. length of dowel 4 in. long, and a short piece of 1/4-in.-dia. dowel that acts as a finger grip for extra torque. You may make a similar tool of your own design, but be sure you can apply enough pressure on the wingnuts to fix the table securely in place. Since you'll be using this table for precision work, a slight shift in the table's position could cause problems.

—John E. Gaynor



WING AREA = 1050 IN.<sup>2</sup>  
 ASPECT RATIO = 0-8  
 WEIGHT = 3.5 LB.  
 POWERPLANT = FRONT INTAKE,  
 REAR EXHAUST METABOLIC HEAT ENGINE  
 FUEL = SUPER CHEAP ROTTEN MEAT

- PERFORMANCE AND OPERATING FEATURES ~
- ✓ SLUGGISH CLIMB BUT SUPER GLIDE
  - ✓ MAX ASSURED EVERY FLIGHT
  - ✓ SELF-TRIMMING
  - ✓ SELF-RETRIEVING FROM TREES
  - ✓ SELF-PROPELLED ON GROUND
  - ✓ WINGS FOLD FOR EASY STORAGE (IN CAGE)

\*MOTHER NATURE'S  
 OPEN CLASS POWER  
 SHIP

\* NOT AVAILABLE IN KIT FORM 1/3 SIZE

022

## ~ TURKEY BUZZARD ~

(REGURGICUS VULGARIS)

\* (71A) 802-7384

INLAND SOARING SOCIETY (SC)<sup>2</sup> CONTEST

SEPTEMBER 26, 1982 AT CAJON HIGH SCHOOL, SAN BERNARDINO

CD Marc Higginbotham\*

*Bryan Blackkoll*

883-2247

Registration: 8:00am to 9:00am  
Pilots meeting: 9:00am  
First flight: After pilots meeting.

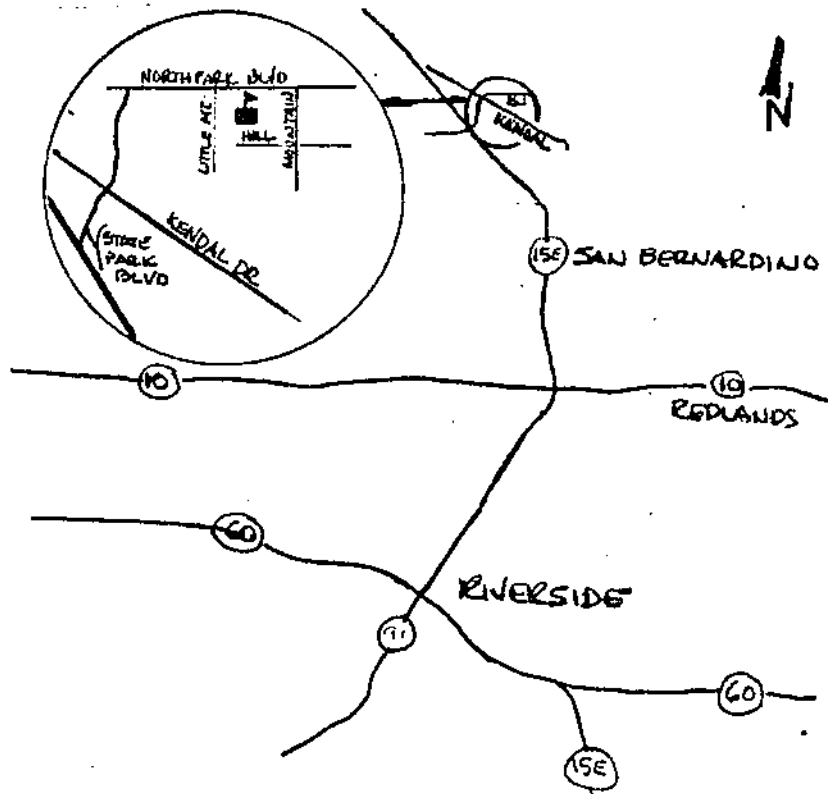
TASKS

Round One: 5 minute Precision/duration Man-on-Man  
900 flight points  
100 landing points

Round Two: 7 minute precision/duration Man-on-Man  
900 flight points  
100 landing points

Round Three: 3 minute precision  
800 flight points (AMA Bell Curve)  
200 landing points

6 volt winches  
600 foot winch lines  
Standard 25 foot radius landing circles  
GRASS FIELD  
Current AMA and FCC required



Hall, Herman  
2023 N. Greengrove St.  
Orange, Ca. 92665

